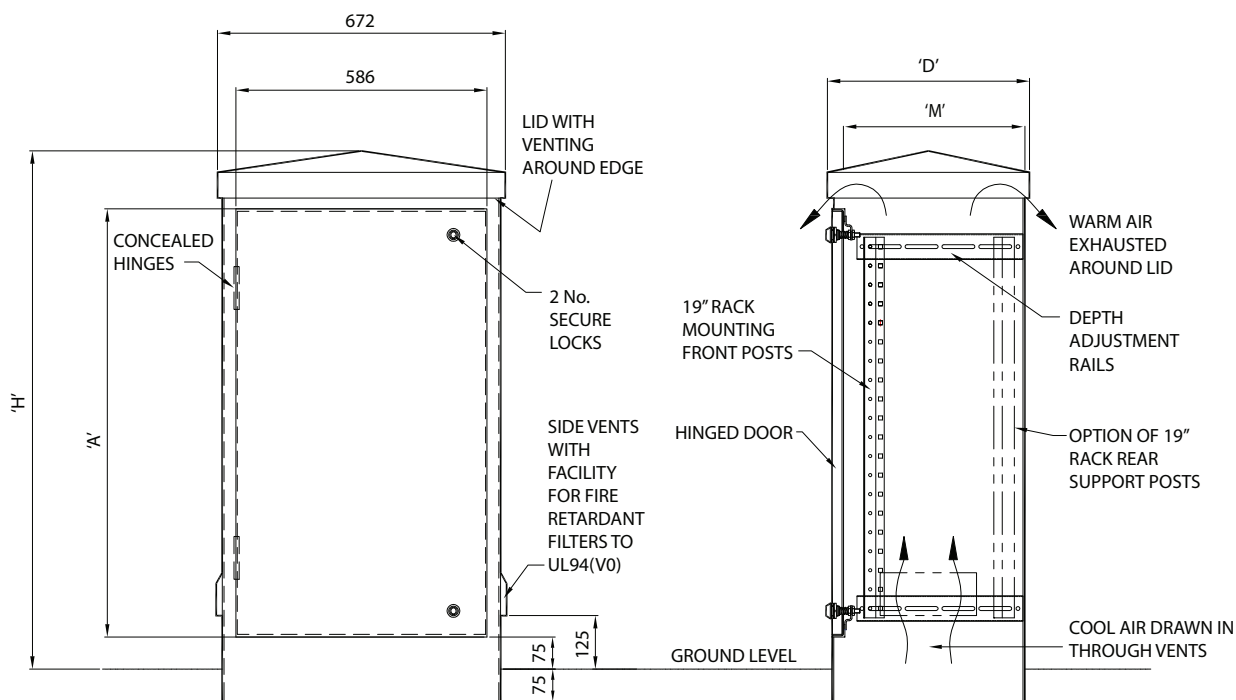


→ AEC Equipment Cabinet Range



AEC Cabinet Range Features

- For use with 19" rack mounted equipment
- Hinged door with internal hinges
- Heavy duty fabricated construction
- Hot dip galvanised finished gives minimum expected 25 year lifespan
- Numerous security features ensure high level of vandal resistance
- Earthing points within cabinet and on door
- Convection air circulation and venting as standard
- Additional back board can also be provided
- Swing frame option available on some models
- Standard colours are I4C39 Holly bush green or Black. Other colours from BS/RAL colour charts available on request
- For security features see p99



| Model No. | Height H | Depth D | Maximum Mounting Depth M | Door Aperture A x 516 | Mounting Post Height | Cabinet Weight Kgs |
|----------------------|-------------|------------|--------------------------------|-----------------------------|----------------------------|--------------------------|
| AEC-90-65-45 | 1010 | 450 | 380 | 650 x 516 | 15u | 120 |
| AEC-90-65-65 | 1010 | 650 | 580 | 650 x 516 | 15u | 132 |
| AEC-111-65-45 | 1210 | 450 | 380 | 850 x 516 | 19u | 140 |
| AEC-111-65-65 | 1210 | 650 | 580 | 850 x 516 | 19u | 154 |
| AEC-13-65-45 | 1410 | 450 | 380 | 1050 x 516 | 24u | 161 |
| AEC-13-65-65 | 1410 | 650 | 580 | 1050 x 516 | 24u | 177 |
| AEC-16-65-45 | 1610 | 450 | 380 | 1250 x 516 | 28u | 180 |
| AEC-16-65-65 | 1610 | 650 | 580 | 1250 x 516 | 28u | 200 |

All dimensions in mm

Options

| Options | PT No. |
|---------------------------------------|----------------|
| Tamper Switch | CAB-TS |
| 4 point locking | /A4P |
| High Security lock in addition | CAB-HS |
| Filter for vents | CAB-F |
| Circulation Fan with filter for vents | /CF |
| Thermostat | CAB-T |
| Heater | CAB-H |
| Swing frame (cabinet width increases) | /SF |
| Padlockable Hasp and Staple | PHS-AEC |
| Backboard - Removable | /BB |
| Rear Struts | /RS |